



FWA 150V 70-1000A

| Type | Electrical Characteristics | | | | Ordering Information | | | Dimensions | Curves |
|----------|----------------------------|---------------------------------------|------------------|------------|----------------------|-------------|---------------------|---------------|----------|
| | Rated Current RMS-Amps | I ² t (A ² Sec) | | Watts Loss | Part Number | Carton Qty. | Carton Weight (lbs) | Figure Number | BIF # |
| | | Pre-arc | Clearing at 150V | | | | | | |
| FWA 150V | 70 | 470 | 4000 | 6.9 | FWA-70B | 1 | 0.18 | Fig. 1 | 35785310 |
| | 80 | 670 | 6000 | 7.7 | FWA-80B | | | | |
| | 100 | 1200 | 12000 | 9.0 | FWA-100B | | | | |
| | 125 | 1870 | 18000 | 11.2 | FWA-125B | | | | |
| | 150 | 2700 | 26000 | 13.5 | FWA-150B | | | | |
| | 200 | 4780 | 45000 | 17.6 | FWA-200B | | | | |
| | 250 | 7470 | 70000 | 22.5 | FWA-250B | | | | |
| | 300 | 10760 | 100000 | 27.0 | FWA-300B | | | | |
| | 350 | 15700 | 140000 | 30.6 | FWA-350B | | | | |
| | 400 | 20300 | 180000 | 35.2 | FWA-400B | | | | |
| | 500 | 39000 | 120000 | 35.0 | FWA-500A | 5 | 2.42 | | |
| | 600 | 46000 | 140000 | 47.0 | FWA-600A | | | | |
| | 700 | 75000 | 220000 | 49.0 | FWA-700A | | | | |
| | 800 | 92000 | 280000 | 58.0 | FWA-800A | | | | |
| | 1000 | 170000 | 510000 | 60.0 | FWA-1000A | | | | |

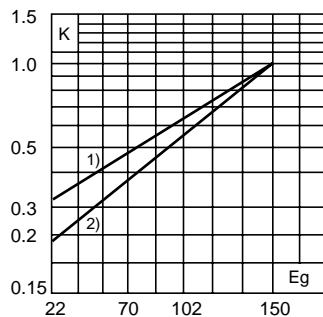
- Interrupting rating 100kA RMS Symmetrical for ampere ratings 70-400.
- Interrupt rating 200kA RMS Symmetrical for ampere ratings 450-1000.
- Watts loss provided at rated current.
- (150 Vdc/Interrupting rating 20kA) U.L. Recognition on 70 - 800 amperes.
- (80 Vdc/Interrupting rating 100kA) U.L. Recognition on 70 - 400 amperes.

1 kg = 2.2 lbs 1 lb = 0.45 kg

Electrical Characteristics

Total Clearing I²t

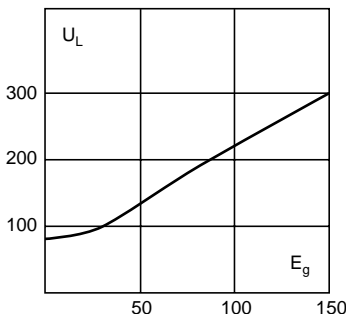
The total clearing I²t at rated voltage and at power factor of 15% are given in the electrical characteristics. For other voltages, the clearing I²t is found by multiplying by correction factor, K, given as a function of applied working voltage, E_g, (RMS).



1) 500-1000 Amp Range
2) 70-400 Amp Range

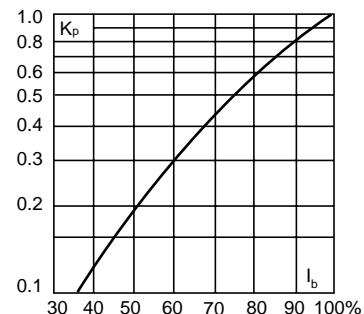
Arc Voltage

This curve gives the peak arc voltage, U_L, which may appear across the fuse during its operation as a function of the applied working voltage, E_g, (RMS) at a power factor of 15%.



Power Losses

Watts loss at rated current is given in the electrical characteristics. The curve allows the calculation of the power losses at load currents lower than the rated current. The correction factor, K_p, is given as a function of the RMS load current, I_b, in % of the rated current.

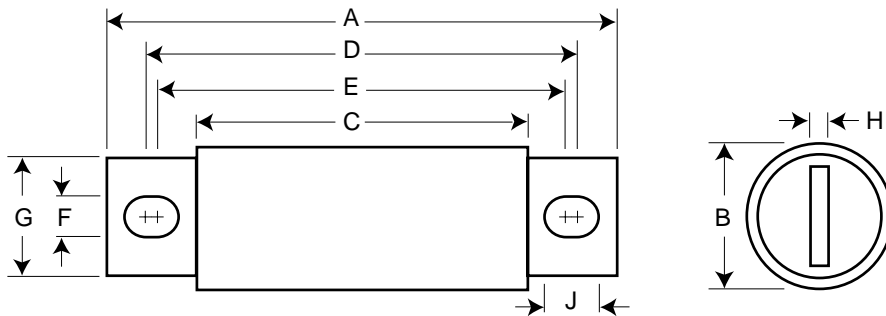


FWA 150V 70-1000A



Dimensions

Fig. 1: 70-1000 Amp Range



Dimension in inches.
1mm = 0.0394" 1" = 25.4mm

| Order # | Fig. | A | B | C | D | E | F | G | H | J |
|----------------|------|-------|-------|-------|-------|-------|-------|-------|-------|-------|
| FWA-70B-400B | 1 | 2.656 | 1.000 | 1.156 | 2.188 | 1.936 | 0.312 | 0.750 | 0.125 | 0.438 |
| FWA-500A-1000A | 1 | 3.476 | 1.500 | 1.250 | 2.579 | 1.917 | 0.433 | 1.000 | 0.250 | 0.764 |

The only controlled copy of this BIF document is the electronic read-only version located on the Bussmann Network Drive. All other copies of this document are by definition uncontrolled. This bulletin is intended to clearly present comprehensive product data and provide technical information that will help the end user with design applications. Bussmann reserves the right, without notice, to change design or construction of any products and to discontinue or limit distribution of any products. Bussmann also reserves the right to change or update, without notice, any technical information contained in this bulletin. Once a product has been selected, it should be tested by the user in all possible applications.

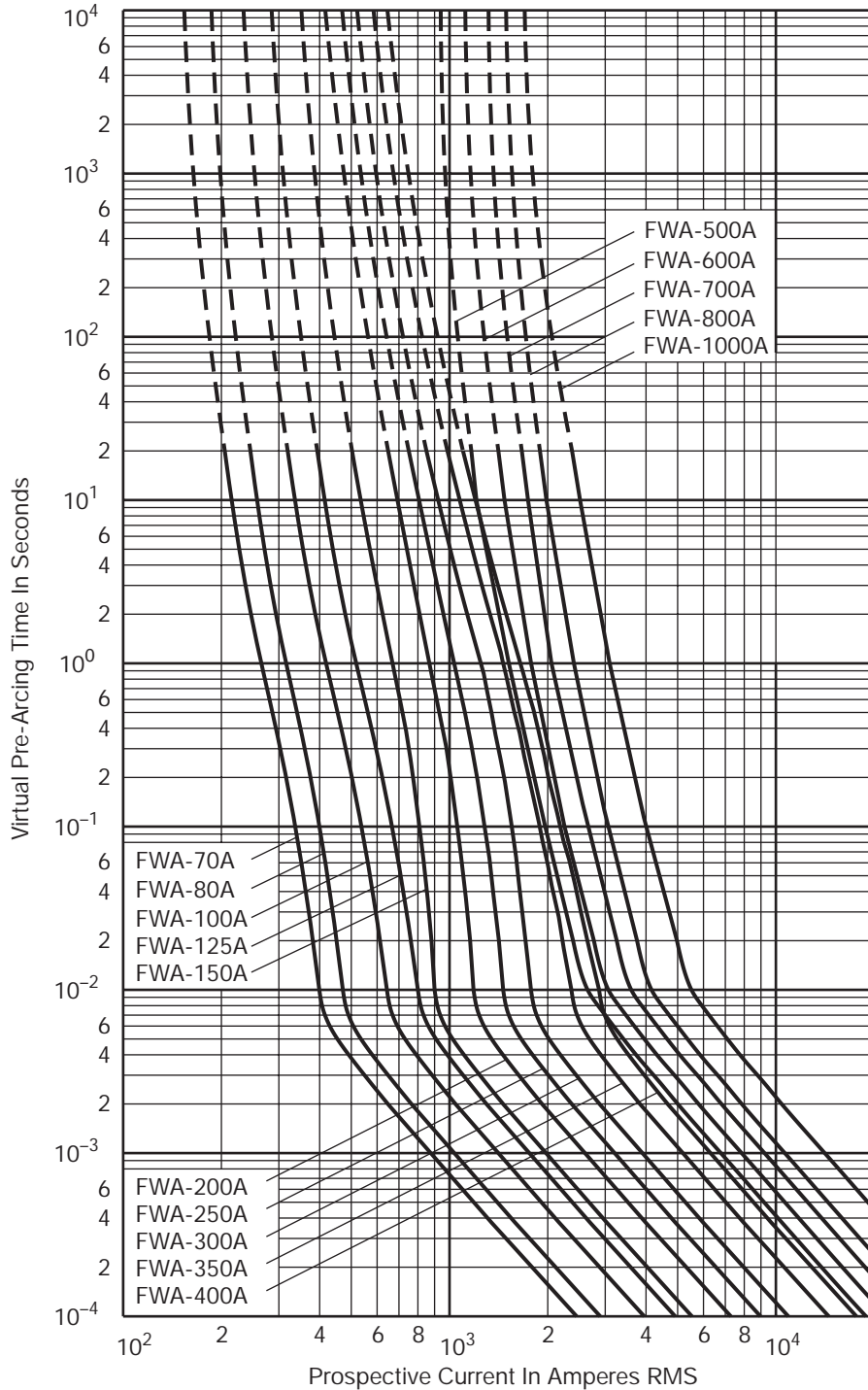


Semiconductor Fuse

70-1000A, 150 Volts

BIF Document
35785310

Size



Minimum Melting

Time-Current Characteristic Curves

FWA 70A-1000A

Approved: **NN**

Page **1 of 3**

Rev. Date: **SEPT-97**

Pub. Date: **JAN-98**

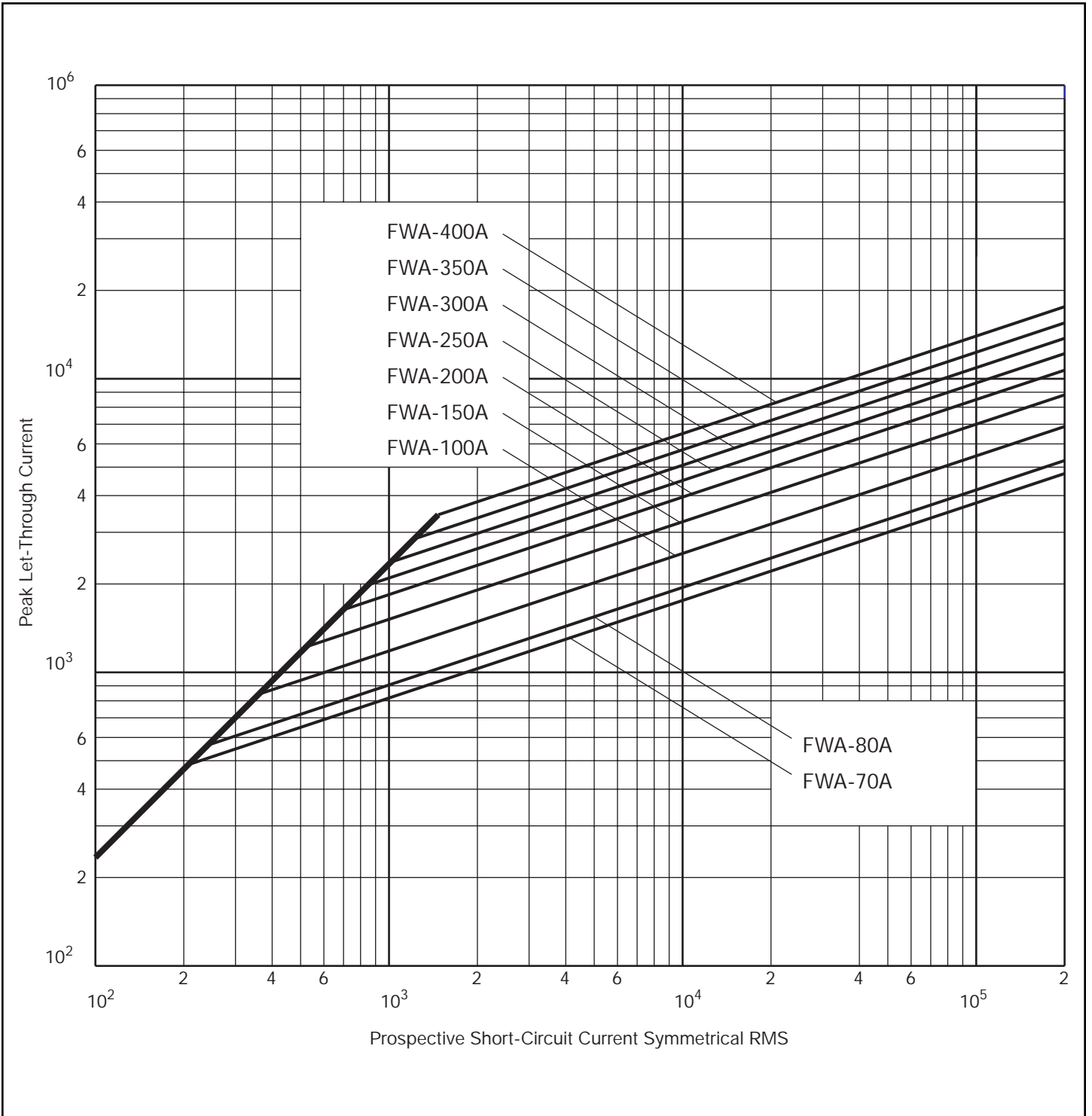


Semiconductor Fuse

70-400A, 150 Volts

BIF Document
35785310

Size



Peak Let-Through Time-Current Characteristic Curves
FWA 70A-400A

Approved: **NN** Page **2 of 3**
Rev. Date: **SEPT-97** Pub. Date: **JAN-98**

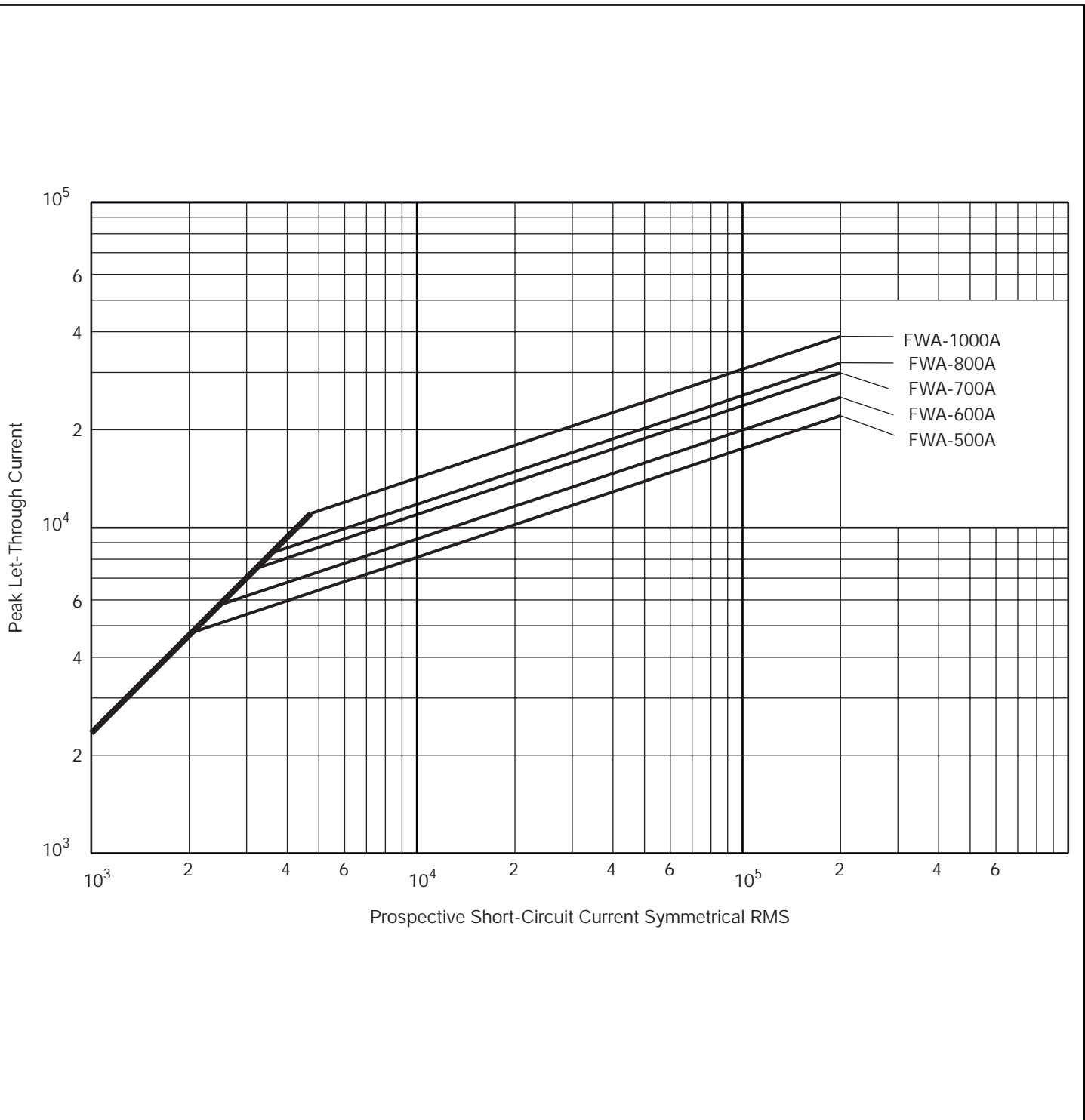


Semiconductor Fuse

500-1000A, 150 Volts

BIF Document
35785310

Size



Peak Let-Through Cut-Off Current Characteristic Curves
FWA 500A-1000A

Approved: **NN**
Rev. Date: **SEPT-97**

Page **3 of 3**
Pub. Date: **JAN-98**